

*Pythium:*  
**morphological taxonomy  
after the molecular revision**

**Arthur de Cock<sup>a</sup>, Gloria Abad<sup>b</sup>, André Lévesque<sup>c</sup>,  
Gregg Robideae<sup>c</sup> & Henk Brouwer<sup>a</sup>**

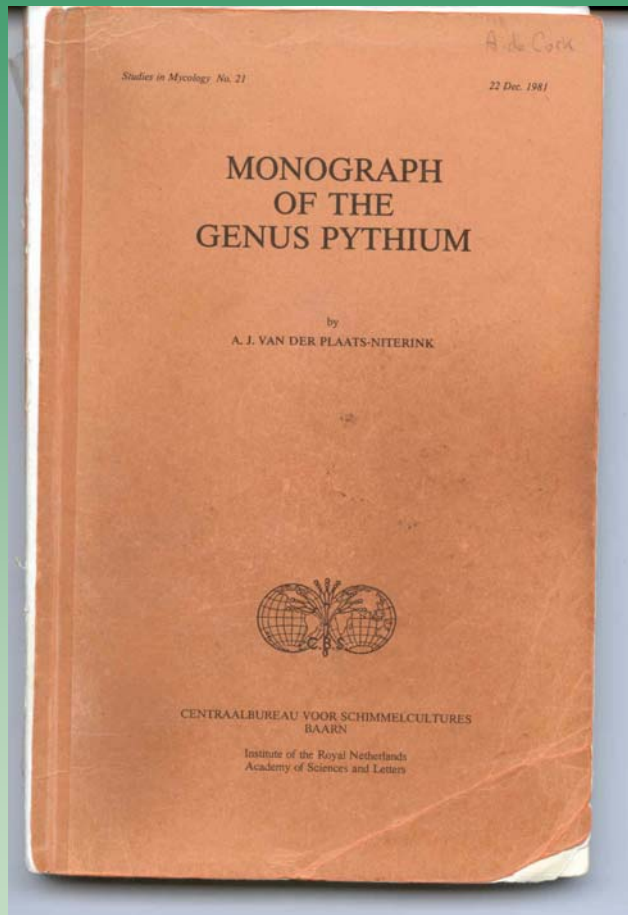
<sup>a</sup>Centraalbureau voor Schimmelcultures, Utrecht, The Netherlands

<sup>b</sup>USDA-APHIS-PPQ-PHP-PSPI-MDL, Beltsville, MD USA

<sup>c</sup>Agriculture & AgriFood Canada, Ottawa, ON Canada



# Centraalbureau voor Schimmelcultures



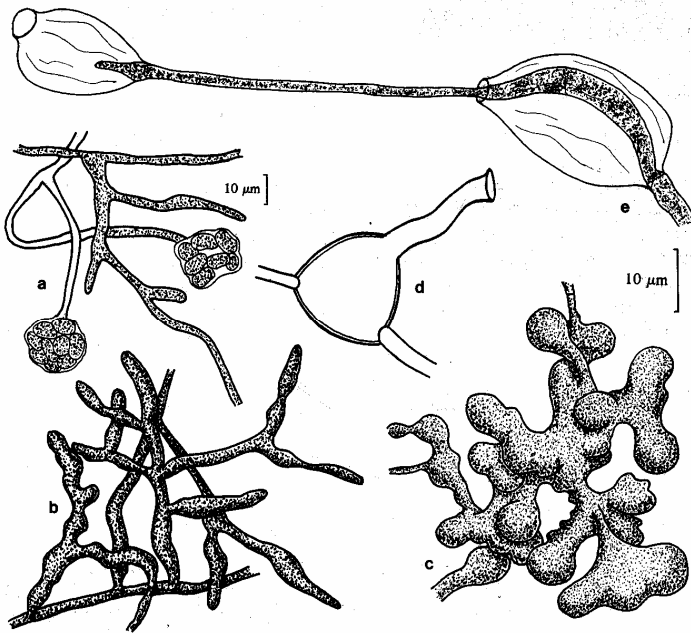
Van de Plaats-Niterink - 1981



Lévesque & De Cock - 2004



## Sporangium types in Pythium



filamentous

filamentous-inflated

globose

globose,  
internally proliferating

# ITS tree of 125 *Pythium* species

Correlation of clustering and sporangium type

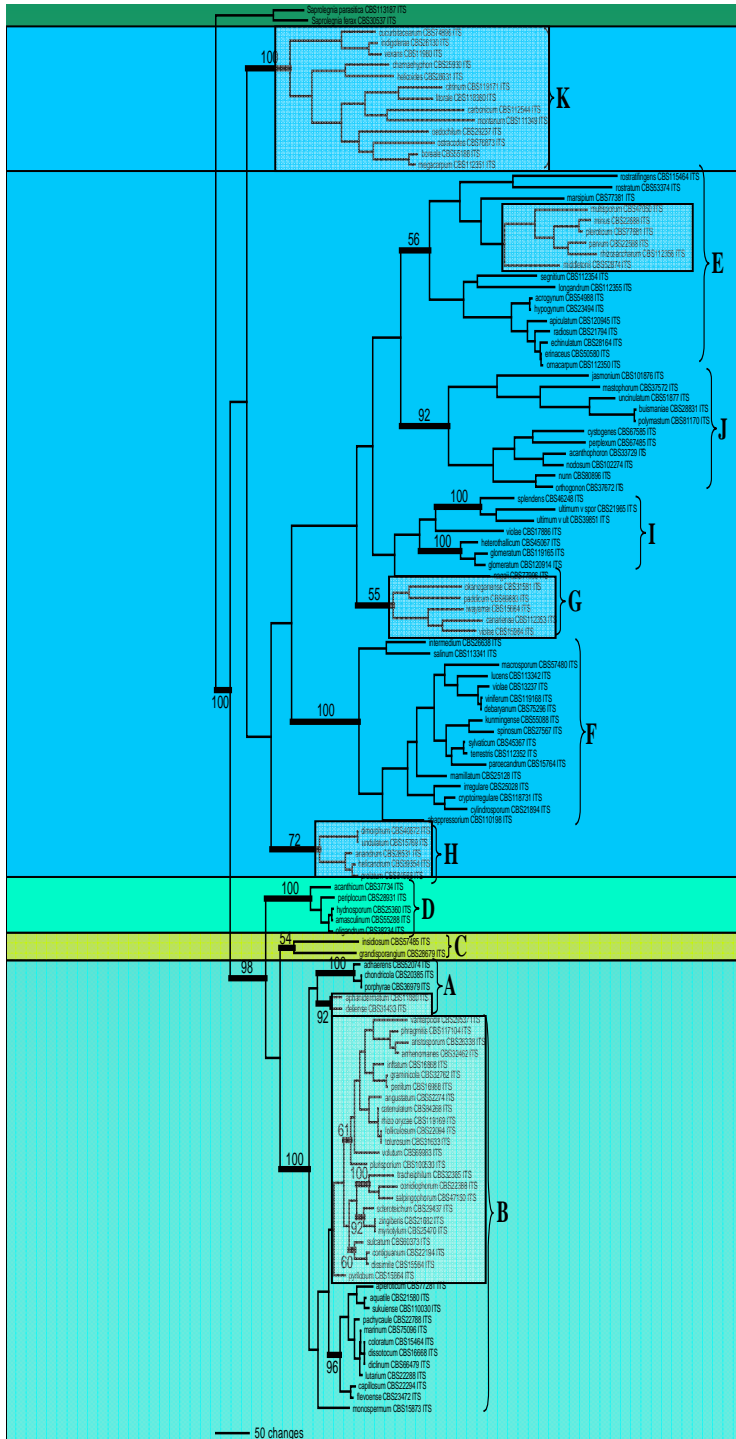
**Globose**

 internally proliferating

**Contiguous**

**Filamentous**

 inflated



Tree generated by parsimony analysis with PAUP of ITS sequences of all *Pythium* species available in culture. Clades are labeled as in L vesque and De Cock (2004).



## Sporangium types in *Pythium*

filamentous

filamentous-inflated

contiguous 

globose

globose,  
internally proliferating

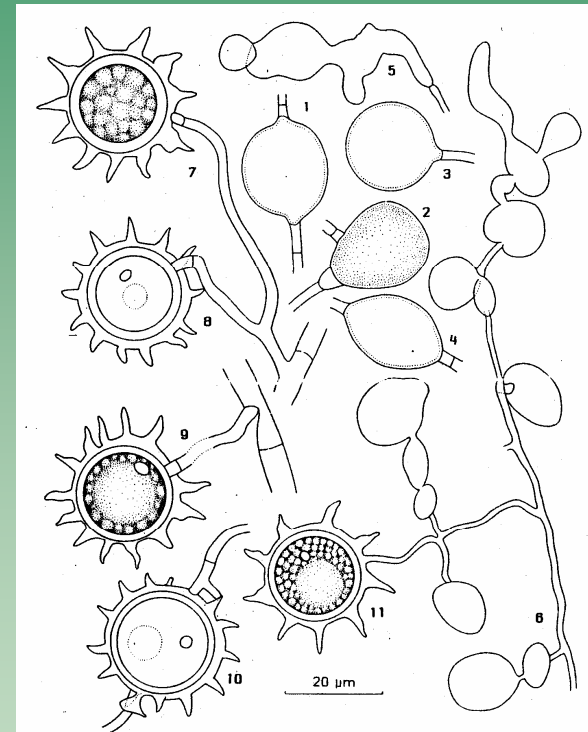
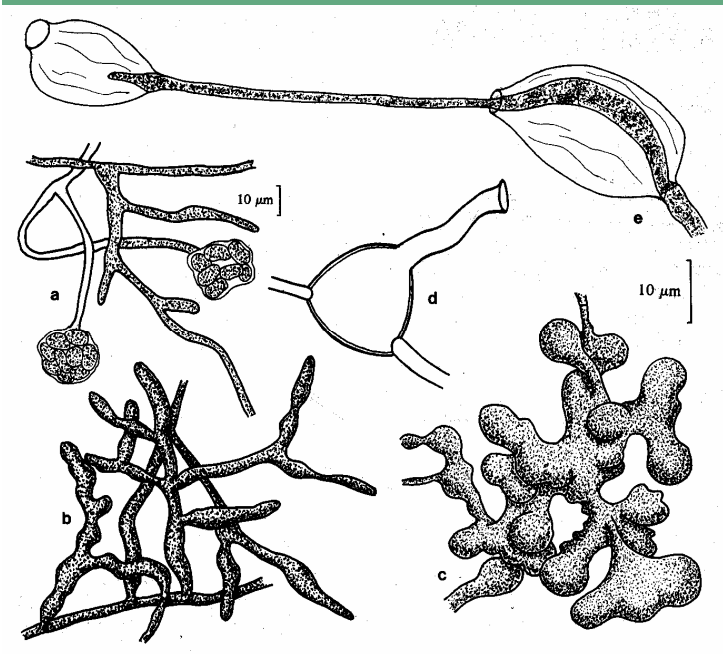
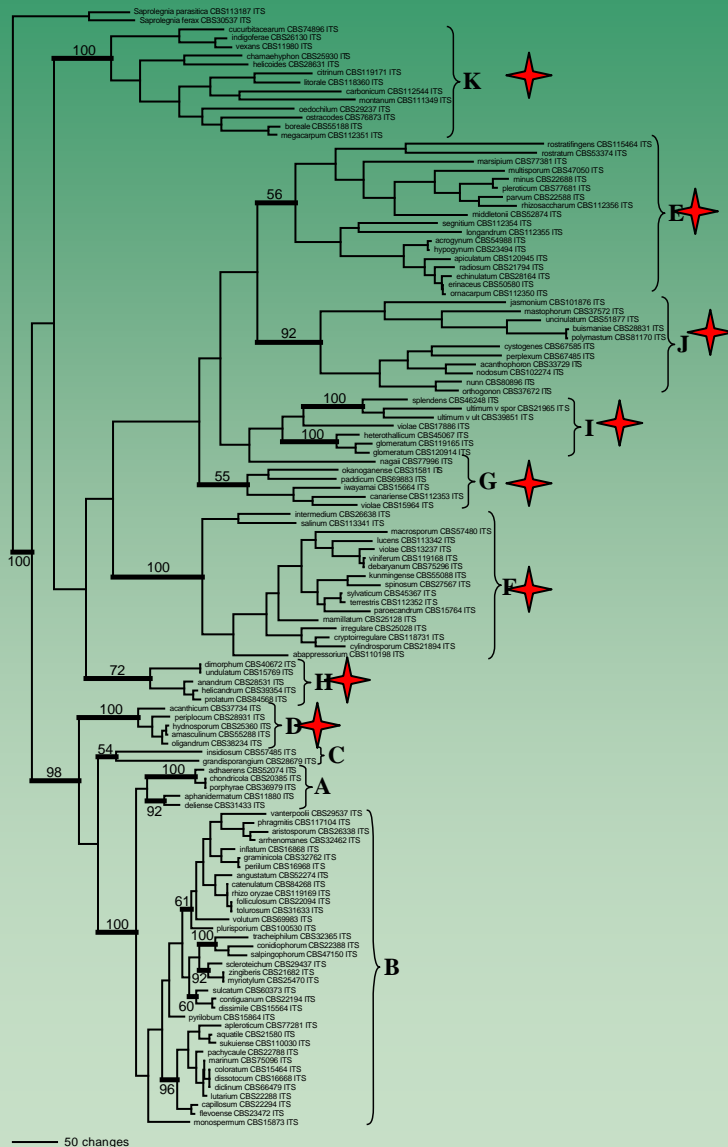


Fig. 4 *Pythium amasculinum* Yu. 1-4. Sporangia; 5, 6. Contiguous sporangia (hyphal swellings); 7-11. Oogonia, antheridi and oospores [S 69-6, type].



# Centraalbureau voor Schimmelcultures

## Oogonium ornamentation



Species with ornamented oogonia are present in

- each of the clades with globose sporangia
- the clade with contiguous spg
- in none of the clades with filamentous sporangia

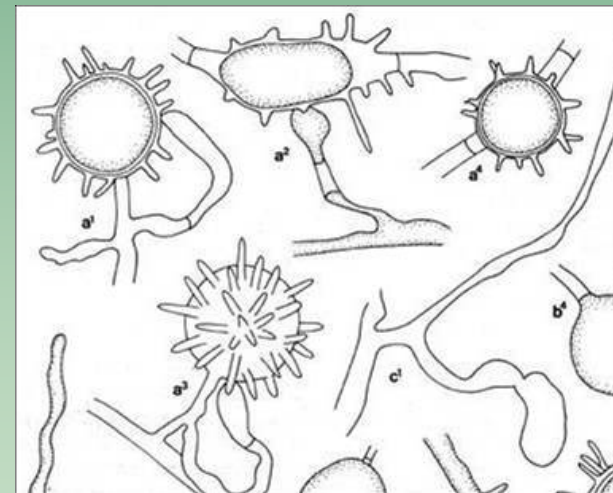




# Centraalbureau voor Schimmelcultures

## Oogonium ornamentation

Ornamentation of oogonia in Clade F is typically digitate



*Pythium spinosum*



## Correlation of clustering and other morphological characters

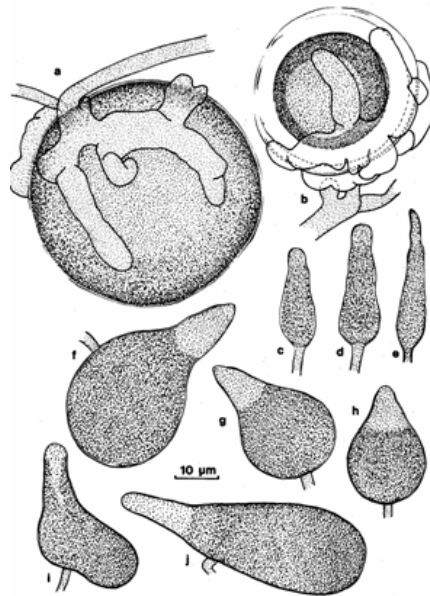
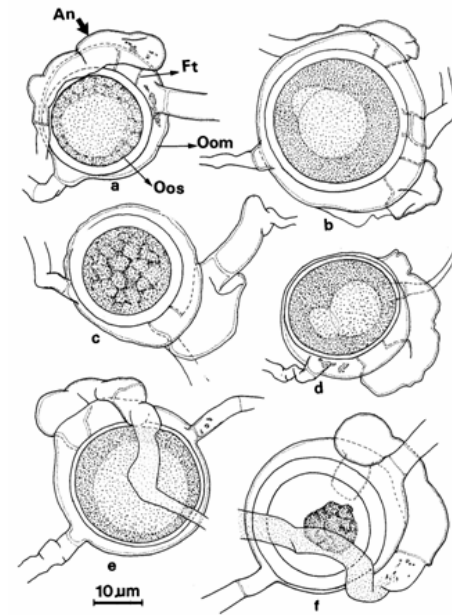


Fig 2. *Pythium grandisporangium* Fell & Master.-- a, b. Oogonia.--c-e. Young, developing sporangia.--f-j. Mature sporangia.

*P. grandisporangium*

**Clade C:** Morphology and habitat very different; phylogenetic relatedness not confirmed by COI and showing differences between Maximum Likelihood and Parsimony analyses for LSU.



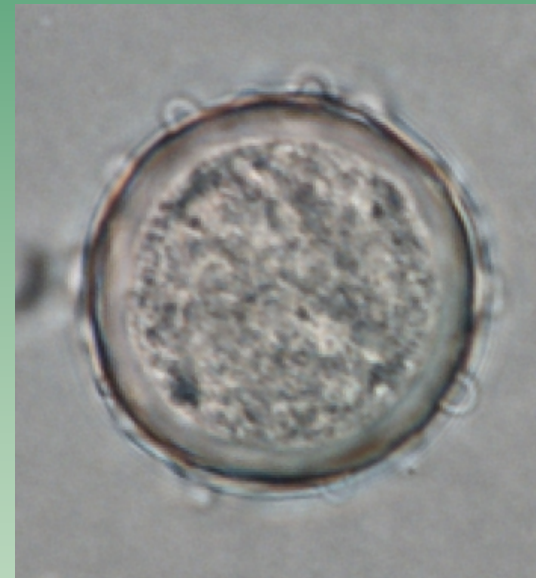
*P. insidiosum*





# Centraalbureau voor Schimmelcultures

## Oogonium ornamentation



*Pythium carbonicum*  
clade K



# Centraalbureau voor Schimmelcultures

## Oogonium ornamentation



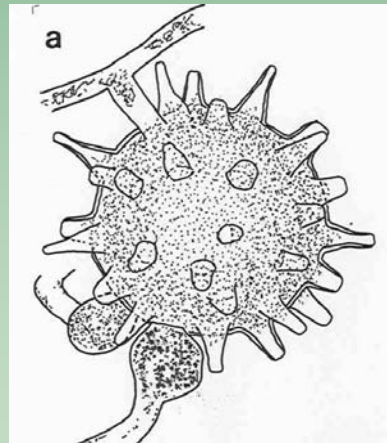
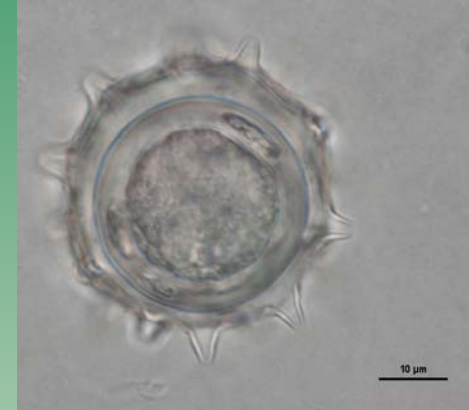
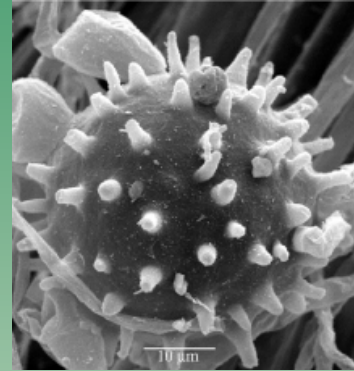
*P. erinaceus*  
clade E

cross septa are present in part of the spines in *Pythium erinaceus*, *P. echinulatum*, *P. radiosum*, and *P. ornacarpum*

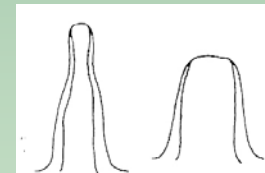


# Centraalbureau voor Schimmelcultures

## Oogonium ornamentation



*P. jasmonium* sp. nov.  
clade J

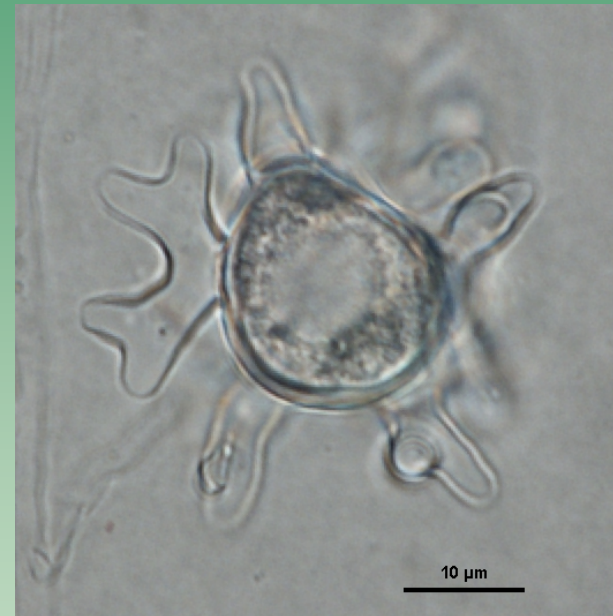






# Centraalbureau voor Schimmelcultures

## Oogonium ornamentation



*Pythium paddicum*  
Clade G



Centraalbureau voor Schimmelcultures

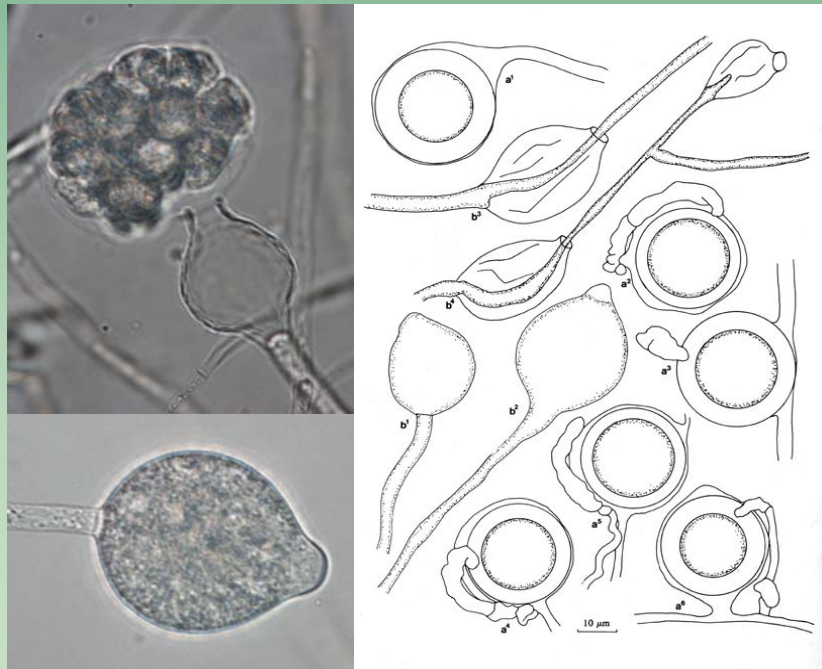
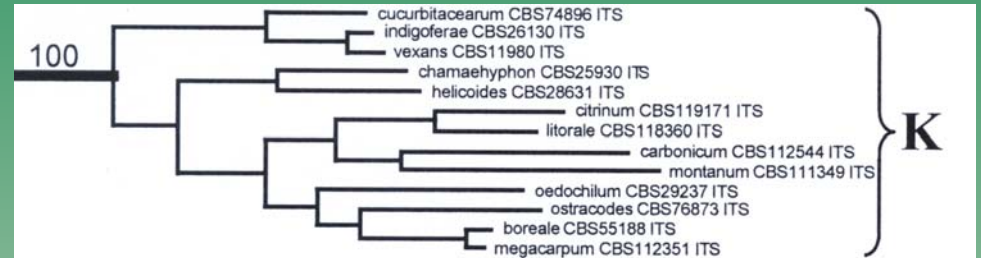
## Correlation of clustering and other morphological characters





## Correlation of clustering and other morphological characters

**Clade K:** sporangia globose to ovoid with papilla and often proliferating internally, large, oogonia, thick-walled oospores, 1-2 elongate antheridia, laterally applied to the oogonium.



*P. carbonicum*

*P. ostracodes*

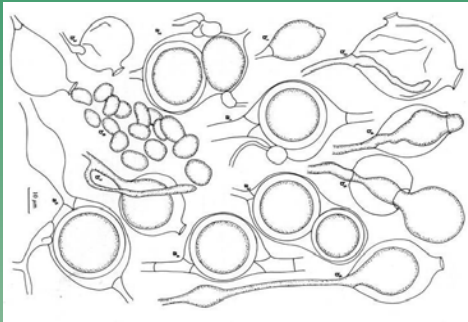
Sequence analysis shows this clade to be closer to *Phytophthora*.

Sporangia and oogonia may show similarity to *Phytophthora*, however, zoospore discharge is *Pythium*-like.

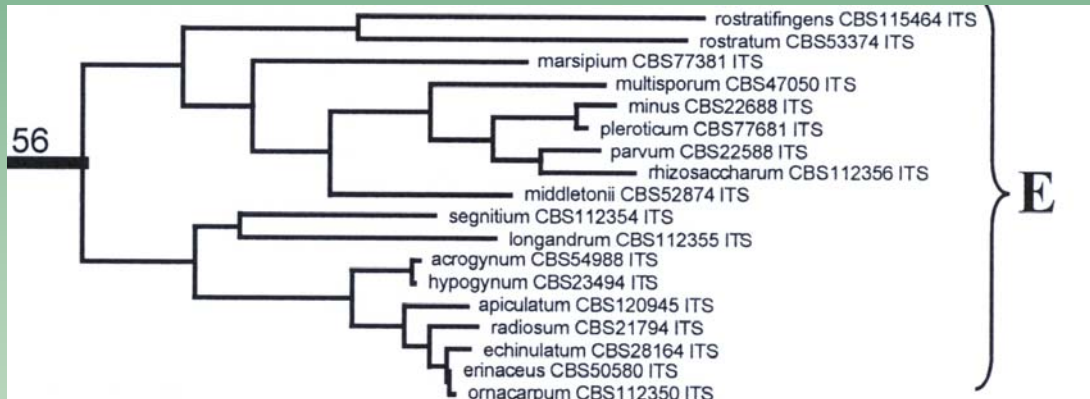
The clade represents a genus intermediate between *Phytophthora* and *Pythium* for which the name *Phytopythium* is proposed.



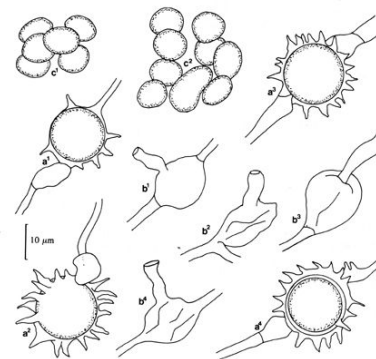
## Correlation of clustering and other morphological characters



*P. multisporum*



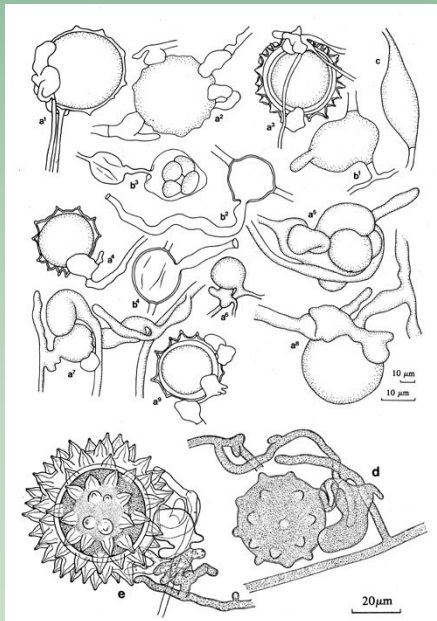
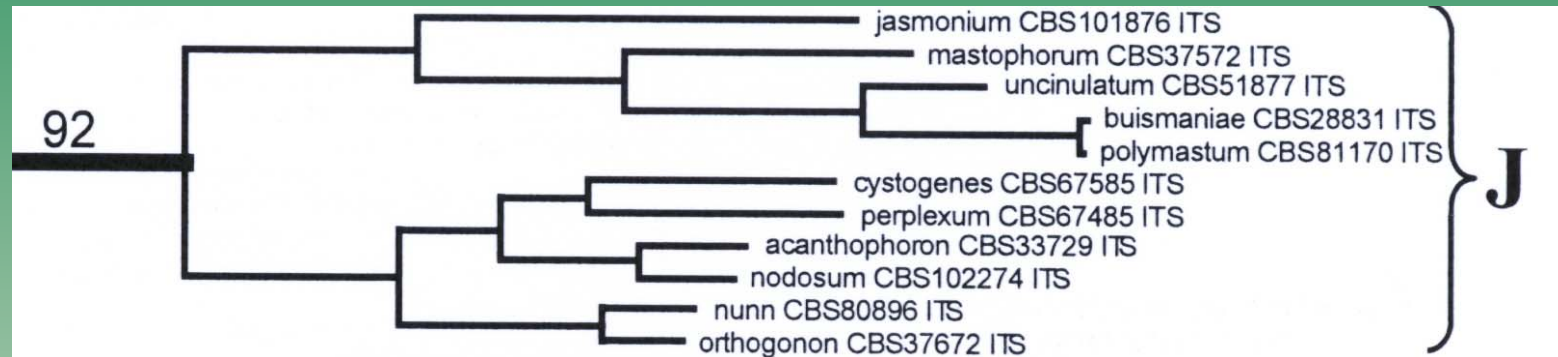
**Clade E:** *P. rostratiformens*-clade: globose, proliferating sporangia or globose hyphal swellings. Oogonia smooth  
*P. segnitium*-clade: ovoid to elongate, nonproliferating sporangia; mostly a single, hypogynous antheridium.



*P. echinulatum*



## Correlation of clustering and other morphological characters

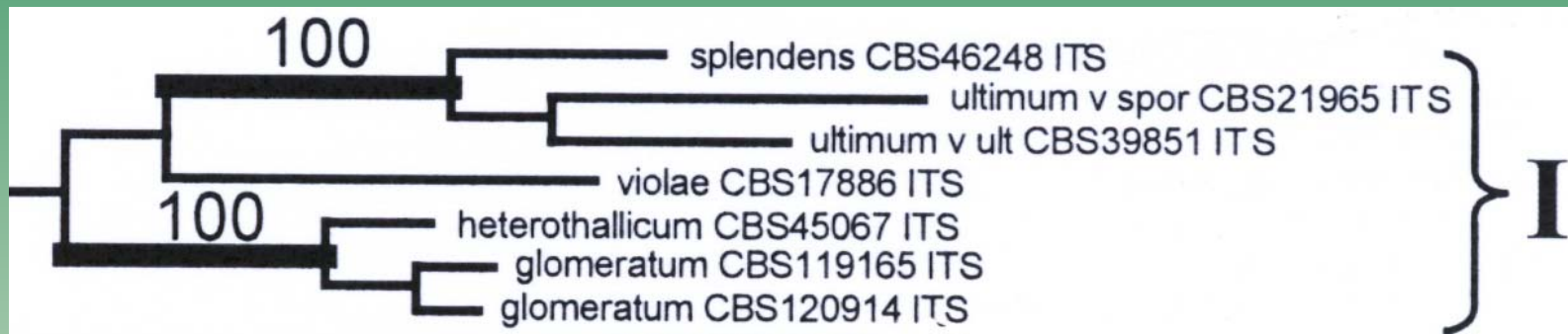


*P. polymastum*

**Clade J:** only the subclade *P. jasmonium-polymastum* is morphologically distinct: large oogonia with conical spines, thick-walled oospores, large globose sporangia.



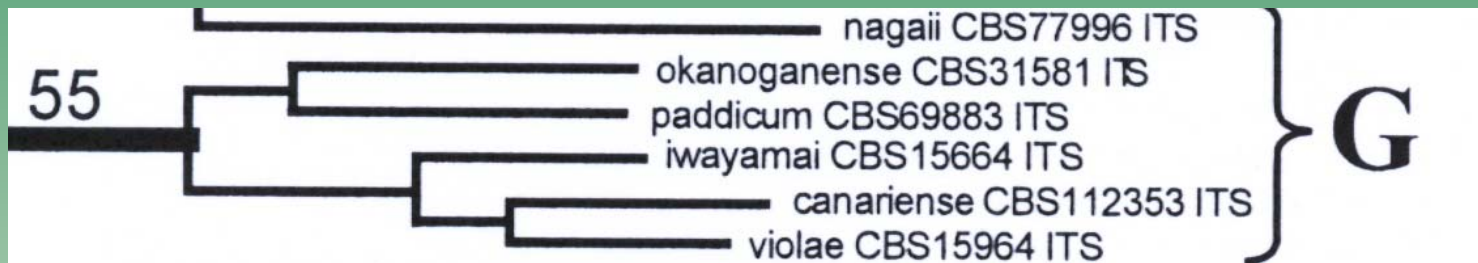
## Correlation of clustering and other morphological characters



**Clade I:** No obvious common morphological characters in this clade. Most species do not produce zoospores.



## Correlation of clustering and other morphological characters

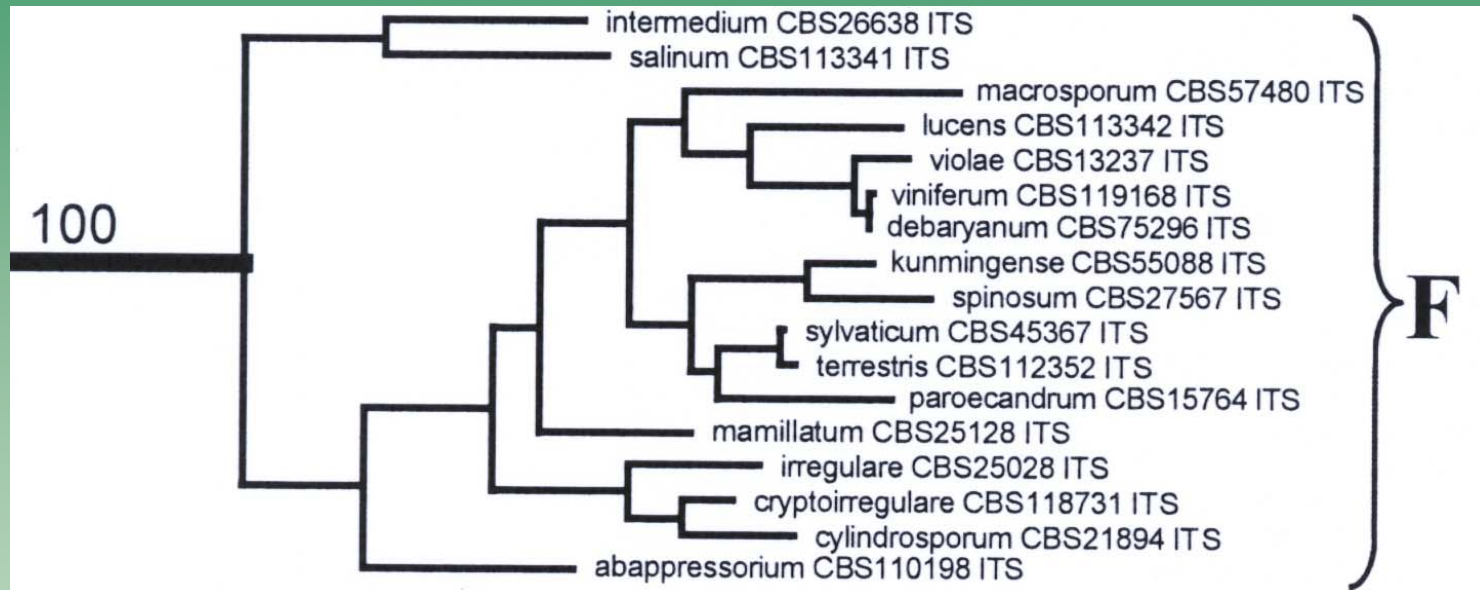


**Clade G:** ovoid, internally proliferating sporangia and smooth oogonia. Ornamentation on the oogonia of *P. paddicum* is unique. Other characters variable. Mainly from monocotyledons in Asia and the USA.





## Correlation of clustering and other morphological characters

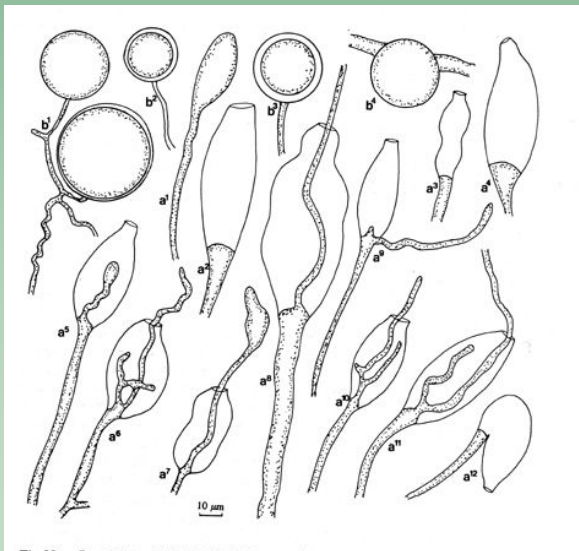
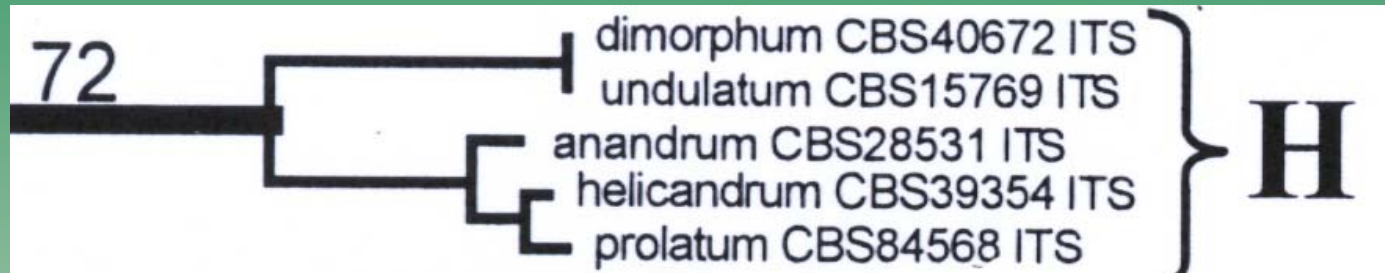


**Clade F:** important, fast growing phytopathogenic species with a worldwide distribution. Globose non-proliferating sporangia or hyphal swellings present. Most species do not or rarely produce zoospores.



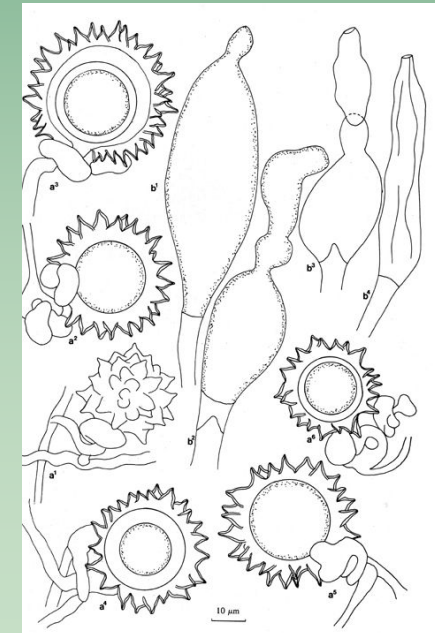


## Correlation of clustering and other morphological characters



*P. undulatum*

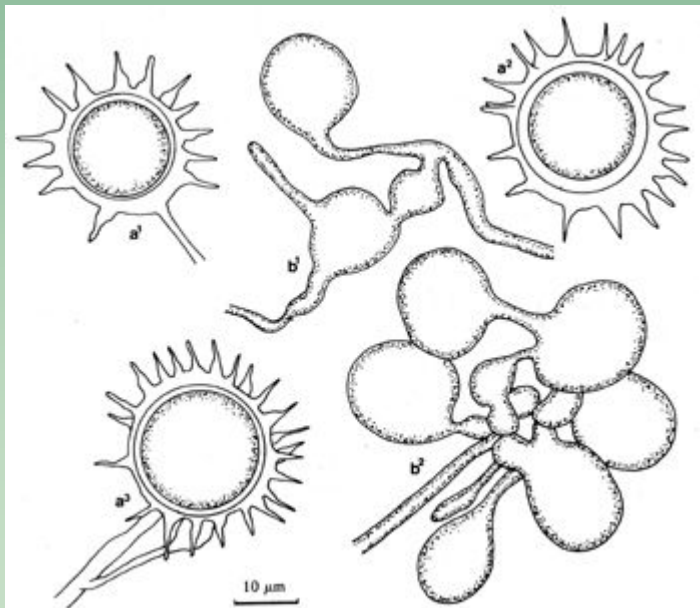
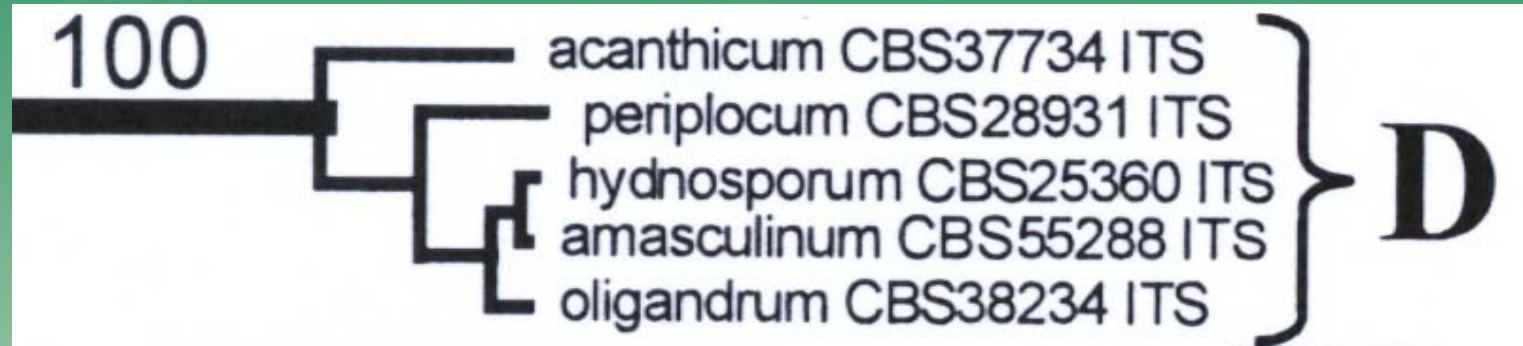
**Clade H.** Very large, ovoid to elongate, internally proliferating sporangia and ornamented oogonia.



*P. helicandrum*



## Correlation of clustering and other morphological characters

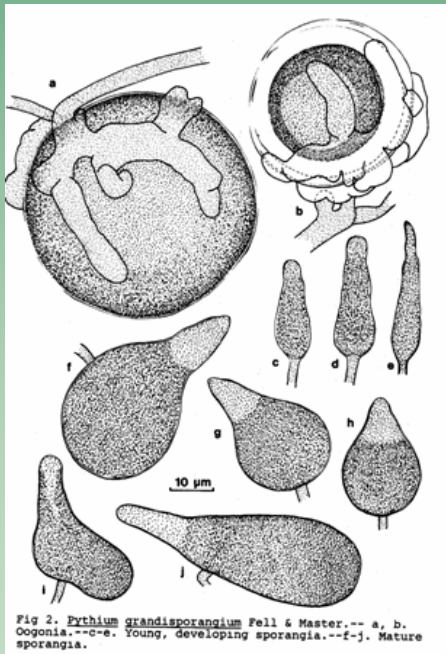


**Clade D:** Contiguous sporangia, oogonia with acute spines. Antheridia absent or entirely attached to oogonium, constricted. Mycoparasites.

*P. oligandrum*

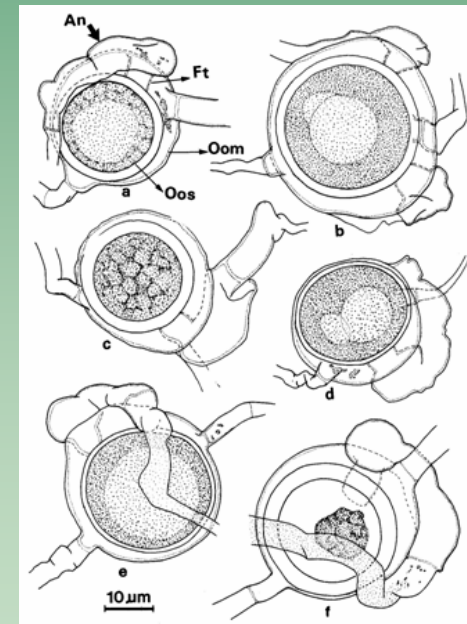


## Correlation of clustering and other morphological characters



*P. grandisporangium*

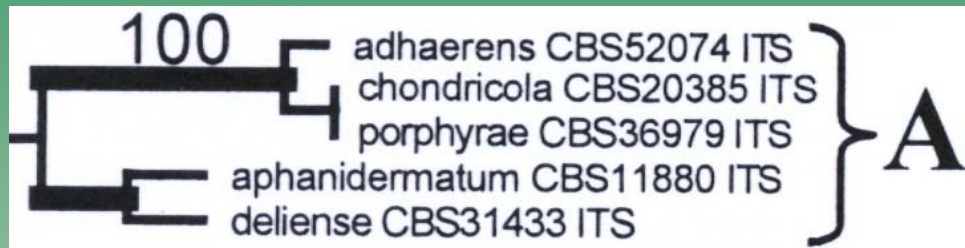
**Clade C:** Morphology and habitat very different; phylogenetic relatedness not confirmed by COI and showing differences between Maximum Likelihood and Parsimony analyses for LSU.



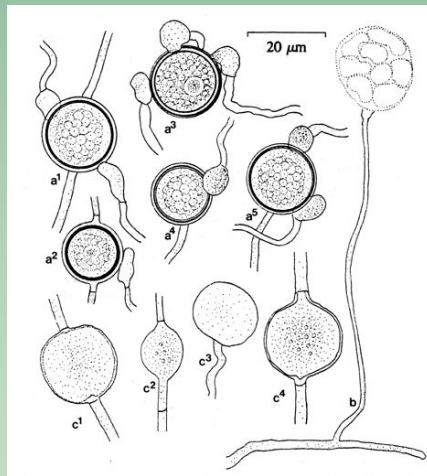
*P. insidiosum*



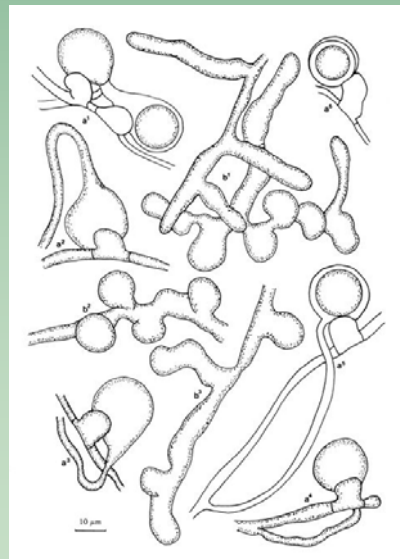
## Correlation of clustering and other morphological characters



**Clade A:** *P. adhaerens* cluster: filamentous non-inflated sporangia, very slow growth. From algae. *P. aphanidermatum* cluster: filamentous inflated sporangia, very fast growth, often intercalary antheridia. From dicotyledons in warmer regions.



*P. porphyrae*

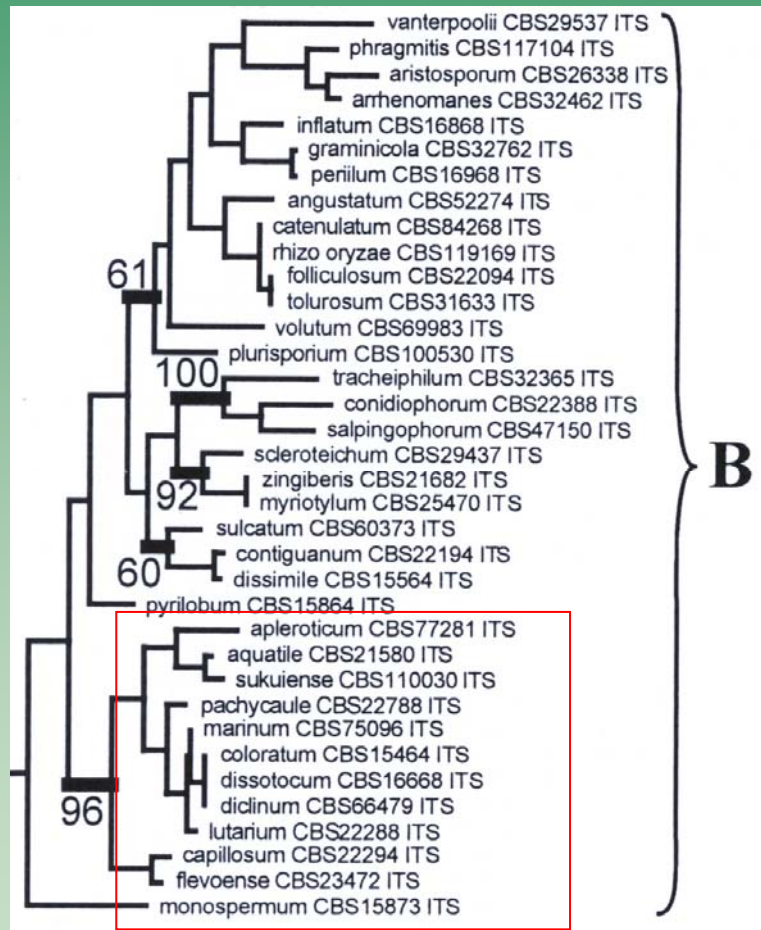


*P. deliense*





## Correlation of clustering and other morphological characters



### Clade B

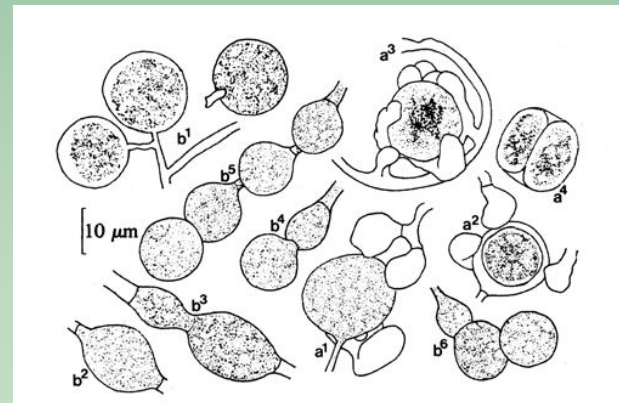
*P. vanterpoolii* cluster:  
filamentous, inflated sporangia;  
smooth oogonia. Most other  
characters variable.  
Predominantly from grasses.

*P. apleroticum*-cluster:  
filamentous non-inflated  
sporangia, smooth oogonia,  
moderate growth rate.



## "Species specific" morphology:

- ornamentation: *P. paddicum*, *P. carbonicum*, *P. solare*, *P. jasmonium*
- segmentation: insidiosum
- deciduous sporangia: intermedium, attrantheridium



*P. intermedium*





**Characters that show no significant correlation with clustering:**

- sporangium size
- antheridium origin and number
- oogonium size
- oospore wal thickness
- apressoria
- heterothallism
- etc.



## Conclusions:

- Sporangium type is evolutionary significant
- the contiguous type is a distinct sporangium type
- oogonium ornamentation is polyphyletic but shows correlation with some (sub-)clades
- some clades are characterized by a subset of characters
- most characters do not correlate with evolutionary patterns but they are useful for identification